

Simplifying Clinical Workflows with Touch-less Access

With a tap of their proximity badge or scan of a fingerprint, Okta and Tecnic provide clinicians with secure access and session persistence across workstations.

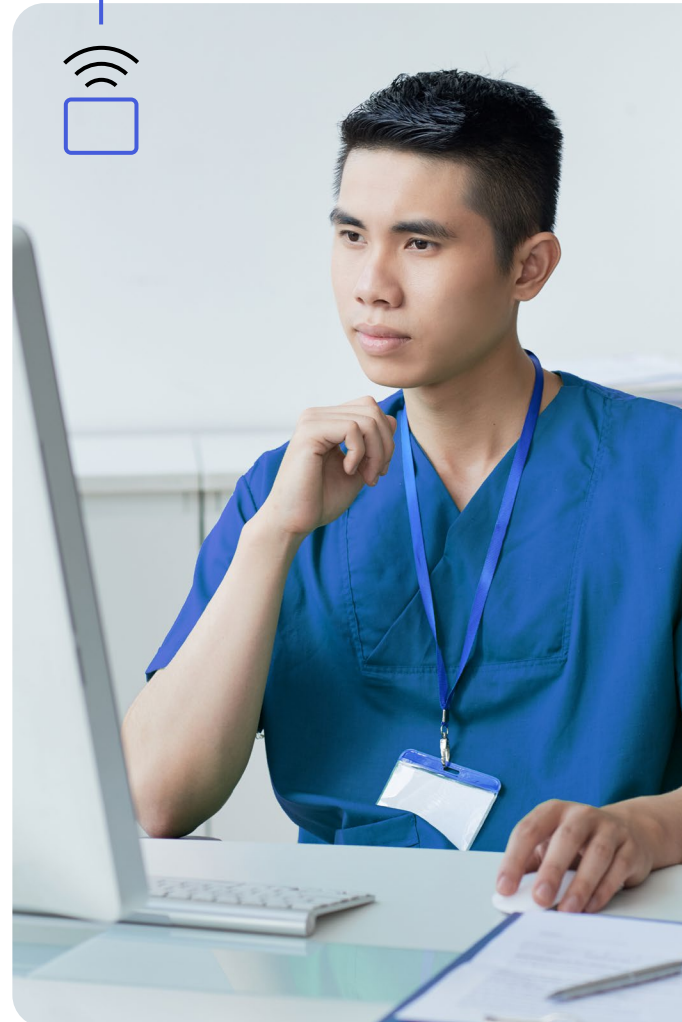
Clinicians are often mobile and use multiple workstations at numerous locations like nursing stations, patient rooms, and a workstation on wheels (WOW). These workstations are usually shared, each being used more than fifty times a day. The greatest workflow challenge is the time it takes for a clinician to access many patient and operational applications having to manually entering the credentials every time. The added time to manually enter credentials in each workstation and application adds significant drag on patient experience, employee satisfaction and operational expense.

Tap and Go for Fast Desktop Login

Okta + Tecnic significantly improves the clinician workflow by providing them a touch-less login experience.

In the same way the clinician taps the card on the door entry panel for building access, they tap it on the card reader for workstation and EMR applications. Whether the clinician is wearing gloves or is covered from head to toe, the proximity card will work every time and seamlessly access the patient data. No more hidden post-it notes containing passwords, application credentials written on the side of the monitor or under the keyboard and other unsecured practices.

TecTANGO - Tap and Go solution for healthcare providers



Key Solution Benefits:

Tap-in, Tap-out, Tap-over to access EMR applications like EPIC or CERNER.

Fast User Switching on shared workstations, thin client or kiosk machines.

Session carry-over from one workstation to other as a clinician moves within the facility.

Touch-less access to clinical application running on VDI environments like Citrix, Microsoft RDS etc.

Supports Proximity Card, Smart Card, Biometrics, PIN, Okta MFA.

Automatic sign-out from unattended workstations or EMR apps.

Compliant with HIPAA data protection standards.

Supports Shared Kiosk / Shared Workstations.

Session Persistence for Applications

To meet HIPAA data protection standards, nearly all modern healthcare systems use data centers to host virtual desktops and EMR applications in VDI environment. Within this type of deployment, clinicians will be required to enter credentials manually several times a day to perform their tasks.

This disrupts workflows and reduces clinician's productivity.

Tecnic's + Okta addresses the productivity challenge by providing session persistent access to EMR applications with just tap of the card. As the clinicians move around from one workstation to another, the state of the EMR applications is always maintained and eliminates the hassle to enter or remember credentials.

Shared Workstations

Shared workstations pose a significant security risk in healthcare settings, as clinicians and healthcare workers often resort to writing their passwords on sticky notes for easy access. This practice not only increases the likelihood of data breaches but also compromises the overall security of sensitive patient information. However, with Okta + Tecnic's, this security challenge is effectively addressed. Each individual can now tap their proximity card, enabling them to seamlessly access their assigned applications through single sign-on (SSO). This touch-less access not only enhances security but also ensures proper auditing and governance by providing a clear record of who logged into which application. By eliminating the need for sticky notes and other unsecured practices, Okta + Tecnic's offers a simple, secure, and efficient solution for shared workstations in healthcare environments.

Okta for Healthcare

Revolutionize healthcare delivery with Okta's cutting-edge identity solutions. Okta's platform empowers healthcare providers to modernize their IT infrastructure, enhance security, and unlock the digital front door to exceptional patient experiences. With Okta, streamline access management through Single Sign-On (SSO), granting users seamless entry to popular applications like Cerner, Epic and more. Strengthen security with multi-factor authentication, safeguarding patient data and meeting compliance requirements. Okta helps automate user lifecycle management for smooth onboarding and efficient access provisioning. By centralizing access controls and enforcing consistent security policies, Okta enables healthcare providers to embrace digital transformation and deliver exceptional, patient-centric care.

The Okta + Tecnic's Solution

Okta + Tecnic's provides a Simple, Secure and Touch-less method for clinician to access various applications without having to worry about passwords. EMR apps like EPIC and CERNER are instantly accessible with a tap of the user's badge or swipe of a fingerprint. For Clinicians, this automated authentication and access eliminates password hassles, streamlines clinical workflows, and simplifies compliance.

For more information on this integration, please contact our sales team at okta.com/contact-sales.

Solution Features:

- Fast and secure SSO for any applications , Cloud or On-prem.
- Enhance badge access security with a PIN or other Okta factors.
- Self-service badge enrollment, biometric enrollment without IT assistance.
- Centralized web-based management console for IT and help desk.
- Supports OpenID Connect (OIDC) integration with option to enforce Okta MFA.
- Sign-on policy configuration.
- Configurable tap behavior.
- Block compromised card to prevent fraud.
- Reset card or biometric enrollment for the user.
- Audit report of user activities.
- Privacy Shield: Automatically activates a dark screen when a clinician walks away from their workstation to protect.

About Okta

Okta is the World's Identity Company. We free everyone to safely use any technology—anywhere, on any device or app. Our Workforce and Customer Identity Clouds enable secure yet flexible access, authentication, and automation that transforms how people move through the digital world and puts Identity at the heart of business security and growth.